

Guidelines of Implementation

EDIFACT-SUBSET

EDITEC

Order Response



Deutscher Großhandelsverband Haustechnik e.V.



ARGE Neue Medien
der deutschen SHK-Industrie e. V.



ORDRSP / D.96B

Version 3.3 / February 2006

Table of Contents - Subset Order Response

1 INTRODUCTION.....	2
2 INSTRUCTIONS FOR USAGE.....	3
3 MESSAGE STRUCTURE DIAGRAM.....	4
4 MESSAGE STRUCTURE OF THE SUBSET.....	5
UNA K 1 Presetting of Separators.....	5
UNB M 1 Usage Data Head Segment.....	6
UNH M 1 Message Head Segment.....	8
BGM M 1 Beginning of Message.....	9
In case of changes to the order response, the usage of EDI should be agreed upon with the partner. This is because these changes may have to be handled differently as far as the process is concerned.....	9
DTM M 3 Date-/Time-/Period Specifications.....	10
IMD K 1 Message Description.....	11
FTX K 1 Free Text.....	12
RFF M 1 Reference Data.....	13
NAD M 1 Name and Address.....	14
RFF M 1 Reference Data.....	16
CTA M 1 Contact Information.....	17
CUX M 1 Currency Data	18
TDT M 1 Transport Data.....	19
TOD M 1 Terms of Delivery.....	20
LOC K 1 Location Data.....	21
ALC M 1 Additional Charges and Allowances.....	22
PCD M 1 Percentage Rate Data.....	23
MOA M 1 Ammount of Money.....	24
LIN M 1 Line Item Data.....	25
IMD K 10 Description of Line Item.....	26
QTY K 1 Quantity.....	27
DTM K 2 Date-/Time-/Period Specifications.....	28
PRI M 1 Price Data.....	29
RFF M 1 Reference Data.....	31
ALC M 1 Additional Charges and Allowances.....	32
PCD M 1 Percentage Rate Data.....	33
MOA M 1 Amount of Money.....	34
SCC M 1 Schedule Conditions.....	35
QTY M 1 Quantity.....	36
DTM M 1 Date-/Time-/Period Specifications.....	37
Example: 38	
UNS M 1 Section Control Segment.....	39
UNT M 1 Message End Segment.....	39
UNZ M 1 User Data End Segment.....	39
MESSAGE EXAMPLE:.....	40

1 Introduction

The EDIFACT Subset at hand, concerning the message type “Order Response” was provided by ITEK GmbH on behalf of Arbeitsgemeinschaft Neue Medien der deutschen Sanitärindustrie e.V. and Deutscher Großhandelsverband Haustechnik e.V.

ITEK GmbH
Technologiapark 19
33100 Paderborn

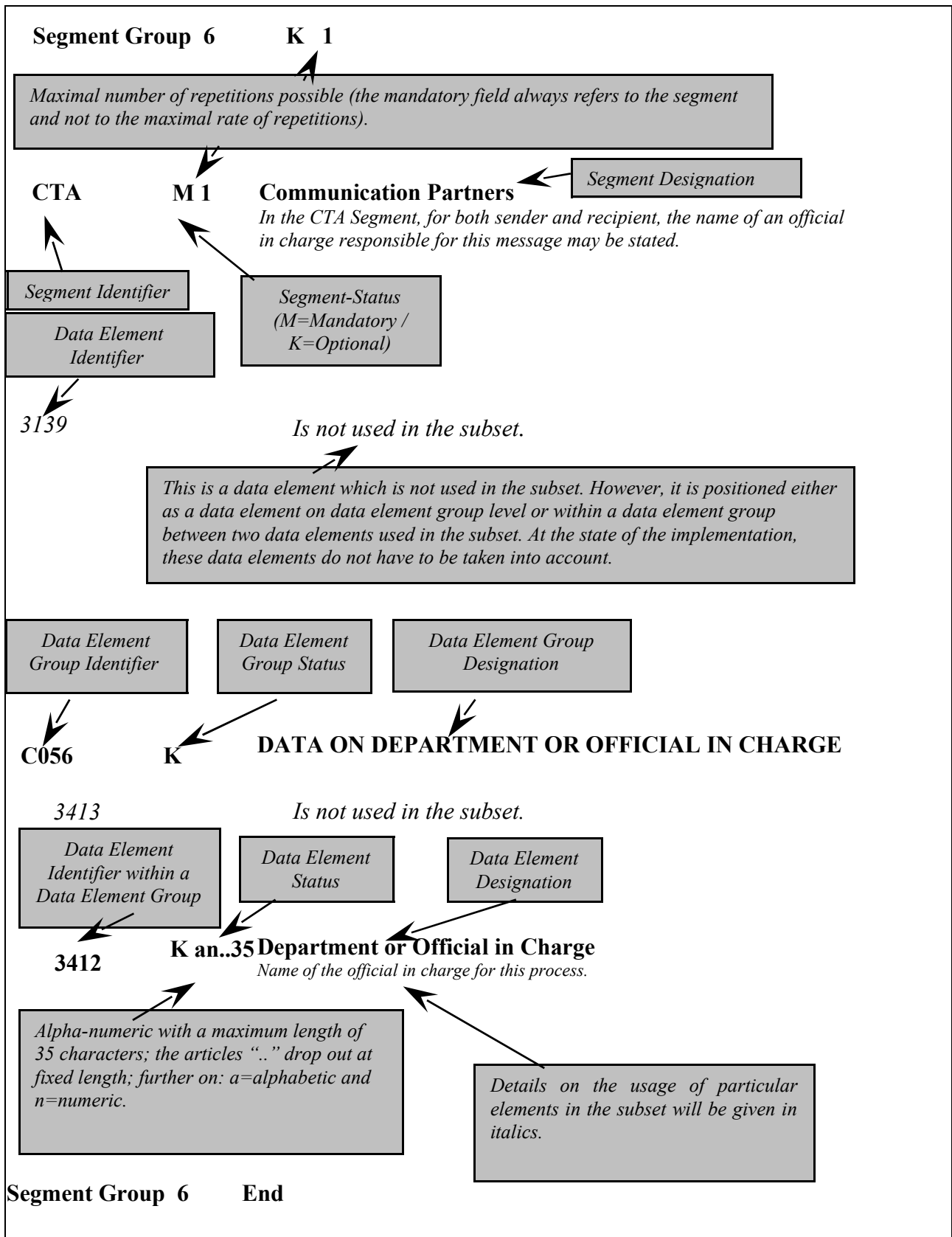
Telephone: (0 52 51) 16 14 –0
Facsimile: (0 52 51) 16 14 –99
E-Mail: editec@itekmbh.de

This EDIFACT subset is based on EDIFACT-Syntax-Version 3 and the following public documents:

- EDIFACT – Standardised message type „ORDRSP“
- UN/EDIFACT Directory 96B, UN/ECE/TRADE/WP.4
- EDIFACT-Application service segments, draft DIN 16560-Teil 1, February 1994
- UN/EDIFACT Codelist D.97A

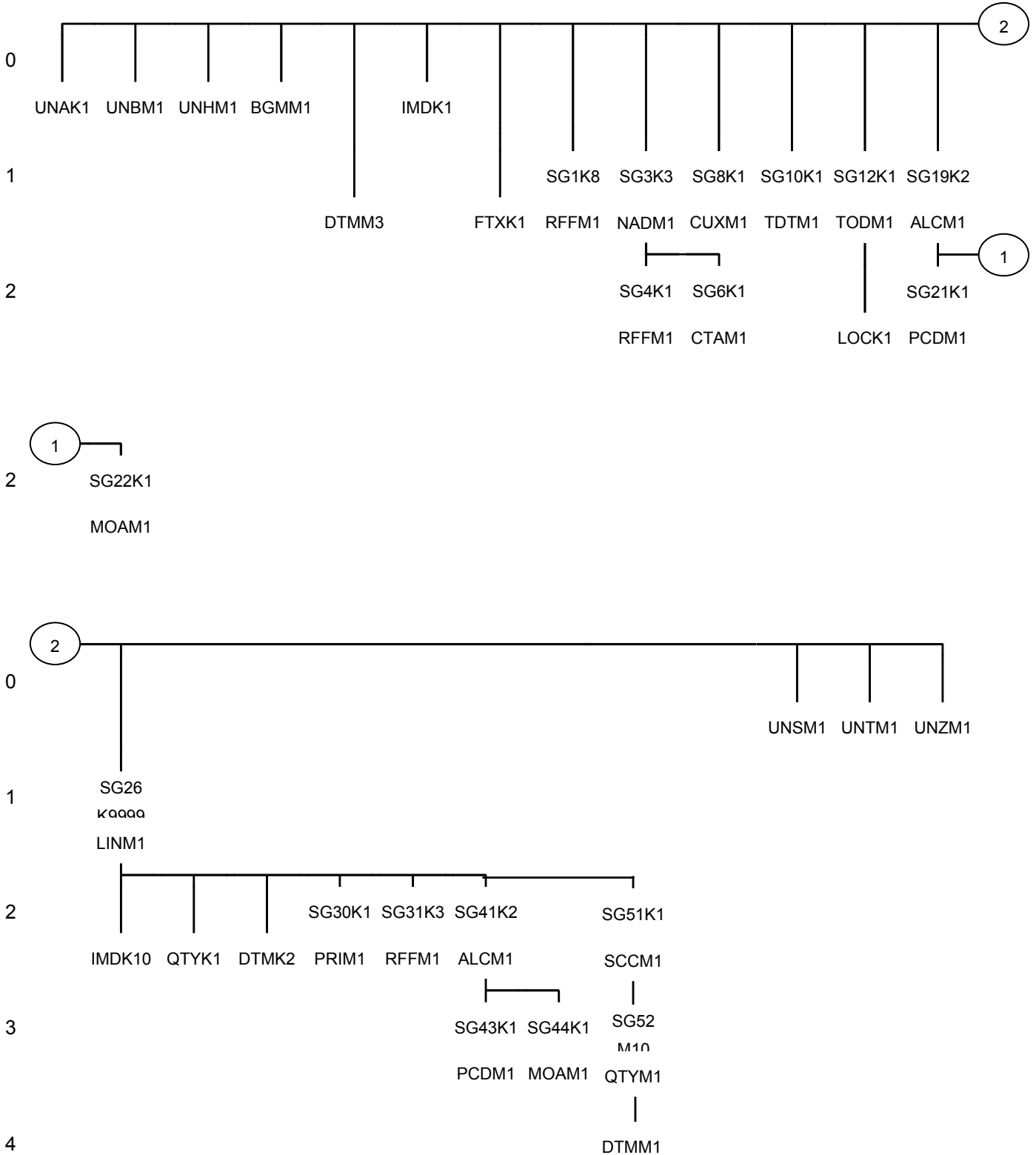
Paderborn, February 2006

2 Instructions for Usage



3 Message Structure Diagram

The following illustration shows the message structure of the subset "Order Response" with segment status and at a maximum rate of repetition.



4 Message Structure of the Subset

UNA K 1 Presetting of Separators

In the UNA-Segment, separators, decimal marks and release indicators are predefined. It is defined only once and applies to the following messages until it is revoked. Consequently, it won't be transferred furthermore.

If needed, value: ":+,? "

: separates data elements in a data element group

+ separates segment identifier, data element groups and data elements

, Decimal marker (comma)

? Release indicator, restores the original meaning of the mark that follows the release indicator.

Blank/space, reserved for later applications

' Segment terminator

UNB	M	1	Usage Data Head Segment
			<i>The UNB-Segment transfers data concerning syntax, sender/recipient of the interchange file, date and time of its creation, and a data exchange reference. Optionally, a password for the recipient may be included in the transfer as well.</i>
S001	M		SYNTAX DESIGNATOR
0001	M	a4	Syntax Identifier
			<i>Constant value:</i>
			„UNOC“ <i>EDIFACT-Syntax Version C</i>
0002	M	n1	Syntax Version Number
			<i>Constant value:</i>
			„3“ <i>EDIFACT-Syntax Version 3</i>
S002	M		SENDER OF THE INTERCHANGE FILE
0004	M	an..35	Sender Designation
			<i>Sender Identifier (e. g. identification number in Telebox400)</i>
0007	K	an..4	Participant Designation, Qualifier
			<i>This data element serves the definite specification of the participants. The following codes are available:</i>
			„52“ <i>Sender IBM/IE-User</i> „65“ <i>Sender Telebox400-User</i> „ZZZ“ <i>Sender (other network operators)</i>
S003	M		RECIPIENT OF THE DATA INTERCHANGE FILE
0010	M	an..35	Recipient Designation
			<i>Recipient Identifier (e. g. identification number in Telebox400)</i>

0007	K	an..4	Participant Designation, Qualifier <i>This data element serves the definite specification of the participants. The following codes are available:</i>
<p>„52“ User IBM/IE-User „65“ Recipient Telebox400-User „ZZZ“ Recipient (other network operators)</p>			
S004	M		DATE/TIME OF CREATION
0017	M	n6	Date of Creation <i>Date of creation of the message by the sender in the format “YYMMTT”. (This format is prescribed according to the EDIFACT Usage Guideline for Service Segments).</i>
0019	M	n4	Time of Creation <i>Format: HHMM</i>
0020	M	an..14	DATA INTERCHANGE REFERENCE <i>Number for each communication address (X.400, Provider, ...) and message type, consistently rising in ascending order. The data exchange reference number serves as a plausibility test for the assessment of double transmissions and failed transmissions. This task is being fulfilled by the converter.</i>
S005	K		REFERENCE/PASSWORD OF THE RECIPIENT
0022	M	an..14	Reference or Password of the Recipient <i>A password permits the access to the network or user system of the recipient. The Sender and recipient may agree upon a password bilaterally.</i>

UNH	M 1	Message Head Segment	<i>In the UNH-Segment, a message is identified definitely. The EDITEC Subset "Order Response" is based on the message type "ORDRSP".</i>		
0062	M an..14	MESSAGE REFERENCE NUMBER	<i>In each transfer file, every message is consistently numbered in ascending order, beginning with „1“. This task is being taken over by the converter.</i>		
S009	M	MESSAGE IDENTIFIER			
0065	M an..6	Message Type Identifier	<i>Constant value:</i> <table border="1" data-bbox="491 831 1444 875"> <tr> <td>„ORDRSP“</td> <td>Order Response</td> </tr> </table>	„ORDRSP“	Order Response
„ORDRSP“	Order Response				
0052	M an..3	Version Number of the Message Type	<i>Constant value:</i> <table border="1" data-bbox="491 999 1444 1043"> <tr> <td>„D“</td> <td>Draft Directory (Directory Draft)</td> </tr> </table>	„D“	Draft Directory (Directory Draft)
„D“	Draft Directory (Directory Draft)				
0054	M an..3	Release Number of Message Type	<i>Constant value:</i> <table border="1" data-bbox="491 1167 1444 1211"> <tr> <td>„96B“</td> <td>UN/EDIFACT Draft Directory D.96B</td> </tr> </table>	„96B“	UN/EDIFACT Draft Directory D.96B
„96B“	UN/EDIFACT Draft Directory D.96B				
0051	M an..2	Administrative Organisation, encoded	<i>Constant value:</i> <table border="1" data-bbox="491 1335 1444 1379"> <tr> <td>„UN“</td> <td>United Nations UN/ECE/TRADE/WP.4</td> </tr> </table>	„UN“	United Nations UN/ECE/TRADE/WP.4
„UN“	United Nations UN/ECE/TRADE/WP.4				
0057	K an..6	Operational Code of the Organisation in Charge	<i>Constant value:</i> <table border="1" data-bbox="491 1503 1444 1547"> <tr> <td>„ITEK33“</td> <td></td> </tr> </table>	„ITEK33“	
„ITEK33“					

BGM	M	1	Beginning of Message <i>In the BGM-Segment, the purpose and name of the message are defined.</i>				
C002	K		DOCUMENT-/MESSAGE NAME				
1001	K	an..3	Document-/Message Name, encoded <i>The following codes are available:</i>				
<table border="0" style="width: 100%;"> <tr> <td style="width: 10%;">„22E“</td> <td><i>Bestellbestätigung aufgrund einer bei der Industrie erzeugten Bestellung (EAN-Code)</i></td> </tr> <tr> <td>„231“</td> <td><i>Bestellbestätigung</i></td> </tr> </table>				„22E“	<i>Bestellbestätigung aufgrund einer bei der Industrie erzeugten Bestellung (EAN-Code)</i>	„231“	<i>Bestellbestätigung</i>
„22E“	<i>Bestellbestätigung aufgrund einer bei der Industrie erzeugten Bestellung (EAN-Code)</i>						
„231“	<i>Bestellbestätigung</i>						
C106	K		DOCUMENT-/MESSAGE IDENTIFICATION				
1004	K	an..35	Document-/Message Identification <i>Order number of the supplier.</i>				
1225	K	an..3	MESSAGE FUNCTION, ENCODED <i>The following codes are available:</i>				
<table border="0" style="width: 100%;"> <tr> <td style="width: 10%;">„4“</td> <td><i>Change (If this message corrects a preceding response of the same response number.)</i></td> </tr> </table>				„4“	<i>Change (If this message corrects a preceding response of the same response number.)</i>		
„4“	<i>Change (If this message corrects a preceding response of the same response number.)</i>						

Implementation Note:

In case of changes to the order response, the usage of EDI should be agreed upon with the partner. This is because these changes may have to be handled differently as far as the process is concerned.

DTM M 3 Date-/Time-/Period Specifications

In the DTM Segment, at least the order date has to be indicated in a response. Additionally, data concerning the delivery date may be given. The purpose of this is to give a delivery arrival date on a daily basis.

C507 M DATE-/TIME-/PERIOD SPECIFICATIONS

2005 M an..3 Date-/Time-/Period Specifications, Qualifier

The following codes are available:

<p>„4“ Order Date „2“ Delivery Date (Date of the arrival of goods at the customer's) „133“ Dispatch Date (Date of dispatch at the supplier's) „17“ Definite Delivery Date</p>
--

Implementierungshinweis:

If possible, a definite delivery date should be given as it is the only exact information on the arrival of the goods at the wholesaler's.

2380 K an..35 Date-/Time-/Period Specifications

Date, formatted as shown in data element 2379.

2379 K an..3 Date-/Time-/Period Specifications, Format, Qualifier

The following codes are available:

<p>„102“ YYYYMMDD „616“ YYYYWW (week of delivery) „203“ YYYYMMDDHHMM (year, month, day, hour, minute)</p>

IMD K 1 Message Description

In the IMD-Segment, the designation marking an order as an express delivery or complete delivery may be transferred.

7077 *IS NOT USED IN THE SUBSET.*

7081 *IS NOT USED IN THE SUBSET.*

C273 K MESSAGE DESCRIPTION

7009 K an..17 Item Description

The following codes are available:

<i>„EL“</i>	<i>Express Delivery (a dispatch using the quickest way of delivery is preferred)</i>
<i>„VL“</i>	<i>Complete Delivery (Complete Delivery)</i>
<i>„EV“</i>	<i>Express Delivery & Complete Delivery</i>

Implementation Note:

„EL“ Express Delivery: Orders with the mark „EL“ are not sent with the producer's next tour or stock delivery. Instead, they are dispatched immediately and delivered on the quickest way.

„VL“ Complete Delivery: The order is sent by the producer when the complete quantity of all items can be delivered.

„EV“ Express & Complete delivery: This is a combination of express delivery and complete delivery.

1131 *Is not used in the subset.*

3055 K an..3 Administrative Organisation, encoded

Constant value:

<i>„89“ Administrative Organisation ITEK</i>
--

FTX	K 1	Free Text	
		<i>In the FTX-Segment of the head section, a text concerning the whole Invoice or alternatively the credit note may be transferred.</i>	
		<i>If possible, using this segment should be avoided, since this necessitates a manual processing of the message.</i>	
4451	M an..3	TEXT, QUALIFIER	
		<i>The following codes are available:</i>	
		<table border="1" style="width: 100%;"><tr><td><i>„ORI“ Additional information concerning the order</i></td></tr></table>	<i>„ORI“ Additional information concerning the order</i>
<i>„ORI“ Additional information concerning the order</i>			
4453		<i>IS NOT USED IN THE SUBSET.</i>	
C107		<i>IS NOT USED IN THE SUBSET.</i>	
C108	K	FREE TEXT	
4440	M an..70	Free Text	
4440	K an..70	Free Text	
4440	K an..70	Free Text	
4440	K an..70	Free Text	
4440	K an..70	Free Text	

Segment Group 1 K 8

This segment group contains the RFF-Segment and serves the referencing of the documents to which the Order Response refers to.

RFF M 1 Reference Data

In the RFF-Segment, numbers concerning the documents to which the Order Response refers to are transferred.

C506 M REFERENCE DATA

1153 M an..3 Reference, Qualifier

The following reference data may be transferred:

<i>„ACE“</i>	<i>Order acceptance number of the supplier</i>
<i>„VN“</i>	<i>Order number of the wholesaler – has to be transferred</i>
<i>„AEP“</i>	<i>Item number</i>
<i>„AFO“</i>	<i>Item Designation (Characters 1-30)</i>
<i>„AFP“</i>	<i>Item Designation (Characters 31-60)</i>
<i>„AAS“</i>	<i>Store Number</i>
<i>„CO“</i>	<i>Number of call-off order</i>
<i>„ZZZ“</i>	<i>Process has already been transferred</i>

Implementation Note:

The store number AAS has to be agreed upon beforehand and individually by producer/supplier and customer/wholesaler.

1154 K an..35 Reference Number

Reference number, refers to the qualifier chosen in data element 1153.

Segment Group 1 End

Segment Group 3

K 3

This Segment Group contains the NAD-Segment and Segment Group 6. It serves the indication of the partners and locations concerned with the message.

NAD M 1 Name and Address

In the NAD-Segment, data concerning the identification of the partners involved is transferred as well as important address data.

3035 M an..3 PARTNERS, QUALIFIER

The following codes are available:

„SU“	Producer (Industry)
„WS“	Wholesaler
„ST“	Shipping Address (transport way connection)

C082 K IDENTIFICATION OF PARTNER

3039 M an..35 Partner Identification Number, encoded

According to the qualifier provided above, the identification number of the partner is indicated here.

1131 *Is not used in the subset.*

3055 K an..3 Administrative Organisation, encoded

The following codes are available:

„9“	EAN (CCG as the German publisher of the ILN numbers)
„ZZZ“	bilaterally agreed upon (customer or supplier numbers)

C058 *IS NOT USED IN THE SUBSET.*

C080 K NAME OF THE PARTNER

3036 M an..35 Name of the Partner

Name 1 of the Partner.

3036 K an..35 Name of the Partner

Name 2 of the Partner.

3036 K an..35 Name of the Partner

Name 3 of the Partner.

C059 K STREET
 3042 M an..35 Street Number and House Number, Post-Office Box

3164 K an..35 LOCATION

3229 *IS NOT USED IN THE SUBSET.*

3251 K an..9 POSTAL CODE

3207 K an..3 COUNTRY, ENCODED

The most important country codes according to ISO 3166 (the postal codes have to be given on the delivery note papers):

„BE“	<i>Belgium</i>
„BG“	<i>Bulgaria</i>
„DK“	<i>Denmark</i>
„DE“	<i>Germany</i>
„FI“	<i>Finland</i>
„FR“	<i>France</i>
„GR“	<i>Greece</i>
„GB“	<i>Great Britain</i>
„IE“	<i>Ireland</i>
„IT“	<i>Italy</i>
„CA“	<i>Canada</i>
„LU“	<i>Luxembourg</i>
„NL“	<i>Netherlands</i>
„NO“	<i>Norway</i>
„AT“	<i>Austria</i>
„PT“	<i>Portugal</i>
„SE“	<i>Sweden</i>
„CH“	<i>Switzerland</i>
„ES“	<i>Spain</i>
„TR“	<i>Turkey</i>
„US“	<i>USA</i>

Segment Group 4 K 1

This segment group contains the RFF-Segment and serves the indication of the WEEE-Registration Number (Waste Electrical and Electronic Equipment) of the partner transferred in the NAD.

RFF M 1 Reference Data

*This Segment serves the indication of the WEEE Registration Number.
The transfer of the WEEE number is obligatory since 11/24/2005.*

C506 M REFERENCE DATA

1153 M an..3 Reference, Qualifier

Constant value:

<i>„XA“ Company/Location registration number (as demanded by law)</i>

1154 M an..35 Reference Number

WEEE Registration Number

Segment Group 4 End

Segment Group 6 K 1

This segment group contains the CTA-Segment which serves the indication of a contact person.

CTA M 1 Contact Information

For both sender and recipient each, the name of an official in charge of this process may be transferred in the CTA-Segment.

3139 *IS NOT USED IN THE SUBSET.*

C056 K DATA ON DEPARTMENT- OR OFFICIAL IN CHARGE

3413 *Is not used in the subset.*

3412 K an.35 Department or Official in Charge
Name of the Official in Charge of this process.

Segment Group 6 End

Segment Group 3 End

Segment Group 8

K 1

This segment group contains the CUX-Segment and serves the transfer of a reference currency for the complete Order Response.

CUX M 1 Currency Data

The CUX-Segment transfers data concerning currency units required for international transactions. They may be omitted on a national level.

C504 K CURRENCY DATA

6347 M an..3 Currency Data, Qualifier

Constant value:

„2“	<i>Reference Currency</i>
-----	---------------------------

6345 K an..3 Currency, encoded

The most important currency codes according to ISO 4217:

„DKK“	<i>Danish Krone</i>
„EUR“	<i>Euro</i>
„GBP“	<i>British Pound</i>
„CAD“	<i>Canadian Dollar</i>
„NOK“	<i>Norwegian Kroner</i>
„PLZ“	<i>Polish Zloty</i>
„SEK“	<i>Swedish Kroner</i>
„CHF“	<i>Swiss Franc</i>
„USD“	<i>US Dollar</i>

Segment Group 8 End

Segment Group 10 K 1

This segment group contains the TDT-Segment which serves the indication of transport data.

TDT M 1 Transport Data

In the TDT-Segment, the mode of transportation for the complete order is transferred.

8051 M an..3 TRANSPORT DATA, QUALIFIER

Constant value:

„13“ for Transport

8028 *IS NOT USED IN THE SUBSET.*

C220 K MODE OF TRANSPORTATION

8067 K an..3 Mode of Transportation, encoded

The following codes are available:

„1“ *Sea freight*
„2“ *Carriage by rail*
„21“ *Express carriage by rail*
„22“ *Waggon*
„3“ *Street (Heavy Goods Vehicle)*
„30“ *Despatch Department*
„4“ *Air freight*
„5“ *Mail*
„50“ *Parcel service*
„51“ *Parcel express service*
„90“ *Pickup*
„6“ *Mixed*

Segment Group 10 End

Segment Group 12

K 1

This segment group contains the segments TOD and LOC and serves the indication of the terms of delivery.

TOD M 1 Terms of Delivery

In the TOD-Segment, the desired terms of delivery are transferred for the complete order.

4055 K an..3 TERMS OF DELIVERY REFERENCE, ENCODED

Constant value:

„6“ Postage

4215

IS NOT USED IN THE SUBSET.

C100 K TERMS OF DELIVERY

4053 K an..3 Terms of Delivery, encoded

The following codes are available:

„CAF“	<i>cost and freight to destination</i>
„DDP“	<i>delivery duty paid to destination</i>
„DAF“	<i>delivered at German frontier, duty unpaid</i>
„FCA“	<i>free carrier</i>
„CAI“	<i>cost and insurance (not prepaid)</i>
„ZZZ“	<i>mutually defined conditions</i>

LOC	K	1	Location Data <i>In the LOC-Segment, data concerning the train station of destination may be transferred.</i>	
3227	M	an..3	LOCATION DATA, QUALIFIER <i>Constant value:</i> <table border="1"><tr><td><i>„11“ Train station of destination</i></td></tr></table>	<i>„11“ Train station of destination</i>
<i>„11“ Train station of destination</i>				
C517	K		LOCATION DATA	
3225	K	an..25	Location Data <i>Indication of the train station of destination.</i>	
1131			<i>Is not used in the subset.</i>	
3055			<i>Is not used in the subset.</i>	
3224	K	an..70	Location Data	
Segment Group	12		End	

Segment Group 19

K 2

This segment group contains the ALC-Segment and the segment groups 21 and 22. It serves the transfer of additional charges and allowances for all line items.

ALC M 1 Additional Charges and Allowances

In the ALC-Segment additional charges and allowances for all line items may be transferred..

5463 M an..3 ADDITIONAL CHARGES AND ALLOWANCES, QUALIFIER

The following codes are available:

„A“	Allowance
„C“	Charge

C552 IS NOT USED IN THE SUBSET.

4471 IS NOT USED IN THE SUBSET.

1227 IS NOT USED IN THE SUBSET.

C214 K SPECIAL PAYMENTS

7161 K an..3 Special Payments, encoded

The following codes are available:

„FI“	Money value per order
„RAA“	Discount rate (for the purpose of information)

The net/after tax multiplier is transferred on the level of the line items. Because of this, all discount rate data in the head section of the Order Response serve for the purpose of information only (e. g. information about a special discount that has been taken into account).

Segment Group 21 K 1

This segment group contains the PCD-Segment and serves the transfer of percentage rate data concerning the additional charges and allowances.

PCD M 1 Percentage Rate Data

In the PCD-Segment the percentage rate of the additional charges and discounts is transferred.

C501 M PERCENTAGE RATE DATA

5245 M an..3 Percentage Rate Data, Qualifier

Constant value:

„3“ Percentage Rate

5482 K n..10 Percentage Rate

The percentage rate is transferred with two positions after the decimal point.

Segment Group 21 End

Segment Group 22 K 1

This segment group contains the MOA-Segment and serves the transfer of additional charges and allowances in terms of concrete amounts of money.

MOA M 1 Ammount of Money

In the MOA-Segment, additional charges or allowances are transferred as a concrete amount of money.

C516 M AMMOUNT OF MONEY

5025 M an..3 Ammount of Money, Qualifier

Constant value:

<i>„8" Ammount of Money</i>

5004 K n..18 Ammount of Money

Additional charge or discount with two positions after the decimal point.

Segment Group 22 End

Segment Group 19 End

Segment Group 26

K 9999

This segment group contains the segments LIN, IMD, QTY, DTM and the segment groups 30, 31, 41, 43, 44, 51 and 52. It serves the transfer of the line item data.

LIN M 1 Line Item Data

In the LIN-Segment, a line item is identified by a successive line item number and an article number. A connection to the line item number of the order is made in the RFF-Segment..

1082 K n..6 LINE ITEM NUMBER

Line item number of the Order Response. The RFF-Segment refers to the line item numbers of the Order.

1229 K an..3 MODE OF THE PROCESS

The following codes are available:

<i>„7“</i>	<i>Wrong article number (not processed by the producer)</i>
<i>„3“</i>	<i>Changed article number (the changed article number is transferred in data element 7140)</i>
<i>„10“</i>	<i>Article is out of stock / not available anymore</i>
<i>„6“</i>	<i>Changed quantity of the article ordered</i>
<i>„23“</i>	<i>Partial delivery (the partial deliveries are indicated in Segment Group 51.)</i>

Implementation Note:

In order to avoid persistent corrections of singular article numbers, a comparison and adjustment of the master data is recommended beforehand.

C212 K PRODUCT IDENTIFICATION

7140 K an..35 Goods Number/Service Number

Supplier's article number; if there is no article number, a textual specification follows in the segment „IMD“. The data element group C212 is not transferred in this case.

7143 K an..3 Goods Number/Service Number, encoded

The following codes are available:

<i>„MF“</i>	<i>Manufacture article number</i>
<i>„EN“</i>	<i>EAN-Number</i>

IMD K 10 Description of Line Item

In the IMD-Segment, an additional text concerning the line item and specifications of an article may be transferred.

If possible, no use should be made of this segment, since it necessitates a manual processing of the message.

7077 *IS NOT USED IN THE SUBSET.*

7081 *IS NOT USED IN THE SUBSET.*

C273 K DESCRIPTION OF LINE ITEM

7009 K an..17 Description of Line Item

<p><i>„ZU“ für an additional text concerning the line item; „SP“ for specifications of the article;</i></p>

ZU This code is used if a verbal description of the item is necessary in addition to the article number. The IMD Segment may be repeated eight times in this case, offering 40 characters for each repetition (thus a total of 320 characters).

SP This code is used if there is no article numbers. The IMD Segment may thereby be repeated two times for the specification of the article, offering 40 characters for each repetition. If the code „SP“ is indicated, there is the additional possibility to use the code „ZU“ for an additional text. This means that in this case, the Segment IMD could be repeated a maximum of ten times.

1131 *Is not used in the subset.*

3055 K an..3 Administrative Organisation, encoded

Constant value:

<p><i>„89“ Administrative organisation ITEK</i></p>

7008 K an..35 Description of the Line Item

Characters 1-35.

7008 K an..35 Description of the Line Item

Characters 36-40.

QTY K 1 Quantity

In the QTY-Segment the confirmed quantity is transferred. If partial deliveries are necessary, the whole quantity is confirmed here. If the confirmation is a change of a previous confirmation, the quantity that has still to be delivered (remaining quantity) is confirmed. Partial deliveries are determined in Segment Group 51.

Implementation Note:

Also consider the example on page 38.

C186 M QUANTITY DATA

6063 M an..3 Quantity, Qualifier

Constant value:

„12“	<i>Quantity</i>
------	-----------------

6060 M n..15 Quantity

Quantity of the article, three positions after the decimal point.

6411 K an..3 Unit of Measurement, Qualifier

The following codes are available:

„CMK“	<i>Square centimetre</i>
„CMQ“	<i>Cubic centimetre</i>
„CMT“	<i>Centimetre</i>
„DZN“	<i>Dozen</i>
„GRM“	<i>Gramme</i>
„HLT“	<i>Hectolitre</i>
„KGM“	<i>Kilogramme</i>
„KTM“	<i>Kilometre</i>
„LTR“	<i>Litre</i>
„MMT“	<i>Millimetre</i>
„MTK“	<i>Square metre</i>
„MTQ“	<i>Cubic metre</i>
„MTR“	<i>Metre</i>
„NRL“	<i>Number of Rolls</i>
„PCE“	<i>Piece</i>
„PR“	<i>Pair</i>
„SET“	<i>Set</i>
„TNE“	<i>Tonne</i>
„ZZZ“	<i>Additional Order Note (see Implementation Note Article Sets)</i>

Implementation Note:

The units of quantity should be consistent in the systems of wholesale trade and industry. For this reason, a comparison of the **article masters (ARTIKELSTÄMME)** is strongly recommended beforehand.

DTM K 2 Date-/Time-/Period Specifications

In the DTM-Segment, data concerning singular line items that diverges from the head section in terms of the delivery date may be provided. The purpose is to provide a date for the arrival of goods on a daily basis.

C507 M DATE-/TIME-/PERIOD SPECIFICATIONS

2005 M an..3 Date-/Time-/Period Specifications

The following codes are available:

<p>„2“ Delivery date (Date of the arrival of goods at the customer's)</p> <p>„133“ Dispatch date (Date of dispatch at the supplier's)</p> <p>„17“ Definite delivery date</p>
--

2380 K an..35 Date-/Time-/Period Specifications

Date, formatted as indicated in data element 2379.

2379 K an..3 Date-/Time-/Period Specifications, Format, Qualifier

The following codes are available:

<p>„102“ YYYYMMDD</p> <p>„616“ YYYYWW (Week of delivery)</p> <p>„203“ YYYYMMDDHHMM (year, month, day, hour, minuet)</p>

In case of partial deliveries (see LIN), no date of delivery is indicated in the DTM on the level of line items. The determination of delivery dates is done in segment group 51.

Segment Group 30 K 1

This segment group contains the PRI-Segment and serves the transfer of prices.

PRI M 1 Price Data
In the PRI-Segment, the prices are transferred. It serves the wholesaler for the verification of data and thus has to be transferred always.

C509 K PRICE INFORMATION

5125 M an..3 Price, Qualifier

The following codes are available:

„GRP“	Gross Price
„NTP“	Net Price

5118 K n..15 Price

Price of the article; two positions after the decimal point.

5375 *Is not used in the subset.*

5387 *Is not used in the subset.*

5284 K n..9 Price Basis per Unit

Quantity to which the previously stated price and the measurement unit indicated in data element 6411 refer to. If, for example, the price refers to one piece, a one has to be transferred in this data element. In addition, the code PCE for piece would have to be transferred in data element 6411. The price basis has to be indicated as follows:

„1“ = 1 unit

„10“ = 10 units

„33“ = 33 units

„100“ = 100 units

etc.

6411 K an..3 Measurement Unit, Qualifier

This data element is to be used only, if the price data refers to another unit of measurement than the quantity data of the order. The following codes are. The following codes are available:

„CMK“	<i>Square centimetre</i>
„CMQ“	<i>Cubic centimetre</i>
„CMT“	<i>Centimetre</i>
„DZN“	<i>Dozen</i>
„GRM“	<i>Gramme</i>
„HLT“	<i>Hectolitre</i>
„KGM“	<i>Kilogramme</i>
„KTM“	<i>Kilometre</i>
„LTR“	<i>Litre</i>
„MMT“	<i>Millimetre</i>
„MTK“	<i>Square metre</i>
„MTQ“	<i>Cubic metre</i>
„MTR“	<i>Metre</i>
„NRL“	<i>Number of rolls</i>
„PCE“	<i>Piece</i>
„PR“	<i>Pair</i>
„SET“	<i>Set</i>
„TNE“	<i>Tonne</i>

Segment Group 30 End

Segment Group 31 K 3

This segment group contains the RFF-Segment and serves the referencing of the line item to line items in previous documents.

RFF M 1 Reference Data

In the RFF-Segment, the numbers of documents are transferred, to which the Order Response line item refers to.

C506 M REFERENCE DATA

1153 M an..3 Reference, Qualifier

The following codes are available:

<i>„VN“</i>	<i>Order number of the wholesaler's</i>
<i>„LI“</i>	<i>Line item number of the order</i>
<i>„AAS“</i>	<i>Store number</i>

1154 K an..35 Reference Number

Reference Number, referring to the qualifier chosen in data element 1153.

Segment Group 31 End

Segment Group 41

K 2

This segment group contains the ALC-Segment and the segment groups 43 and 44. It serves the transfer of additional charges and allowances concerning the order line items.

ALC M 1 Additional Charges and Allowances

In the ALC-Segment additional charges and allowances concerning singular line items are transferred.

5463 M an..3 ADDITIONAL CHARGES AND ALLOWANCES, QUALIFIER

The following codes are available:

„A“	Allowance
„C“	Charge

C552 IS NOT USED IN THE SUBSET.

4471 IS NOT USED IN THE SUBSET.

1227 IS NOT USED IN THE SUBSET.

C214 K SPECIAL PAYMENTS

7161 K an.3 Special Payments, encoded

The following codes are available:

„FI“	Money Value per price unit
„SF“	Net multiplier

Money values are absolute, fixed values. They are taken into account (in Ansatz gebracht) at the final step of the chain calculation (Kettenrechnung).

Segment Group 43 K 1

This segment group contains the PCD-Segment and serves the transfer of the net multiplier.

PCD M 1 Percentage Rate Data

In the PCD-Segment, the net multiplier is transferred.

C501 M PERCENTAGE RATE DATA

5245 M an..3 Percentage Rate Data, Qualifier

Constant value:

„1“ Multiplier

5482 K n..10 Percentage Rate

The multiplier is transferred with four positions after the decimal point.

Segment Group 43 End

Segment Group 44

K 1

This segment group contains the MOA-Segment and serves the transfer of additional charges and allowances in terms of concrete amounts of money.

MOA M 1 Amount of Money

In the MOA-Segment an additional charge or allowance is transferred as an amount of money.

C516 M AMOUNT OF MONEY

5025 M an..3 Amount of Money, Qualifier

Constant value:

„8“ Amount of Money

5004 K n..18 Amount of Money

Additional Charge or Allowance; two positions after the decimal point.

Implementation Note:

Because of the multiplier's limit of four positions after the decimal point, the MOA Segment with the total of additional charges and allowances should be transferred always in order to avoid differences in rounding.

Segment Group 44 End

Segment Group 41 End

Segment Group 51 K 1

If a complete delivery is not possible, this Segment Group contains data concerning partial deliveries of the line item.

SCC M 1 Schedule Conditions

In the SCC-Segment conditions of the scheduling (in this case of partial deliveries) are defined.

4017 M an..3 SCHEDULE STATUS INDICATOR, ENCODED

Constant value:

<i>„22“ Delivery according to schedule</i>
--

Segment Group 52

M 10

This segment group contains data concerning quantities and dates for partial deliveries of the line item. It is possible to indicate up to 10 partial deliveries. The total sum of partial deliveries has to be the same as the confirmed quantity in the QTY of segment group 26.

QTY M 1 Quantity

In the QTY-Segment the quantity of the partial delivery is transferred.

C186 M QUANTITY DATA

6063 M an..3 Quantity, Qualifier

Constant value:

„11“	<i>Teilmenge der bestätigten Menge</i>
------	--

6060 M n..15 Quantity

Quantity of the article; three positions after the decimal point.

6411 K an..3 Measurement Unit, Qualifier

The following codes are available:

„CMK“	<i>Square centimetre</i>
„CMQ“	<i>Cubic centimetre</i>
„CMT“	<i>Centimetre</i>
„DZN“	<i>Dozen</i>
„GRM“	<i>Gramme</i>
„HLT“	<i>Hectolitre</i>
„KGM“	<i>Kilogramme</i>
„KTM“	<i>Kilometre</i>
„LTR“	<i>Litre</i>
„MMT“	<i>Millimetre</i>
„MTK“	<i>Square metre</i>
„MTQ“	<i>Cubic metre</i>
„MTR“	<i>Metre</i>
„NRL“	<i>Number of rolls</i>
„PCE“	<i>Piece</i>
„PR“	<i>Pair</i>
„SET“	<i>Set</i>
„TNE“	<i>Tonne</i>

DTM M 1 Date-/Time-/Period Specifications

In the DTM-Segment, data concerning the delivery date of singular partial delivery quantities may be provided. The purpose is to provide a date for the arrival of goods on a daily basis.

C507 M DATE-/TIME-/PERIOD SPECIFICATIONS

2005 M an..3 Date-/Time-/Period Specifications

Constant value:

<p>„2“ <i>Delivery date (Date of the arrival of goods at the customer's)</i> „133“ <i>Dispatch date (Date of dispatch at the supplier's)</i></p>

2380 K an..35 Date-/Time-/Period Specifications

Date, formatted as indicated in data element 2379.

2379 K an..3 Date-/Time-/Period Specifications, Format, Qualifier

The following codes are available:

<p>„102“ <i>YYYYMMDD</i> „616“ <i>YYYYWW (week of delivery)</i> „203“ <i>YYYYMMDDHHMM (year, month, day, hour, minute)</i></p>
--

Segment Group 52 End

Segment Group 51 End

Segment Group 26 End

Example:

SG 26	LIN+3+23+4711:WF	Line item data concerning article number 4711
	IMD+++ZU::89: <i>Text</i>	Description of the line item
	QTY+12:24:PCE	Confirmed quantity = 24 pieces
SG 51	SCC+22	Delivery according to schedule
SG 52	QTY+11:12:PCE	Partial quantity of the confirmed quantity = 12 pieces
	DTM+2:20060915:102	Delivery date of partial quantity = 09/15/2006
	QTY+11:3:PCE	Partial quantity of the confirmed quantity = 3 pieces
	DTM+2:20060930:102	Delivery date of partial quantity = 09/30/2006
	QTY+11:3:PCE	Partial quantity of the confirmed quantity = 3 pieces
	DTM+2:20061015:102	Delivery date of partial quantity = 10/15/2006
	QTY+11:6:PCE	Partial quantity of the confirmed quantity = 6 pieces
	DTM+2:20061030:102	Delivery date of partial quantity = 10/30/2006

UNS	M 1	<p>Section Control Segment</p> <p><i>The UNS-Segment is a service-segment and marks the separation of line item and sum part.</i></p>	
0081	M a1	<p>SECTION DESIGNATION, ENCODED</p> <p>Constant value:</p> <table border="1" style="width: 100%; border-collapse: collapse;"> <tr> <td style="padding: 2px;">„S“ Separation of position/line item- and sum part</td> </tr> </table>	„S“ Separation of position/line item- and sum part
„S“ Separation of position/line item- and sum part			
UNT	M 1	<p>Message End Segment</p> <p><i>In the UNT-Segment, the number of segments and a message reference number are transferred for the purpose of a plausibility verification.</i></p>	
0074	M n..6	<p>NUMBER OF SEGEMENTS IN A MESSAGE</p> <p><i>Number of segments transferred with this message, including the segments UNH and UNT.</i></p>	
0062	M an..14	<p>MESSAGE REFERENCE NUMBER</p> <p><i>Here, the same reference number as in UNH / 0062 has to be entered. This number is compared to the entry in the Segment UNH at the stage of the reception of the message.</i></p>	
UNZ	M 1	<p>User Data End Segment</p> <p><i>In the UNZ-Segment a data exchange counter and a data exchange reference may be transferred.</i></p>	
0036	M n..6	<p>DATA EXCHANGE COUNTER</p> <p><i>Here, the number of messages is entered in the usage data frame UNB... UNZ.</i></p>	
0020	M an..14	<p>DATA EXCHANGE REFERENCE</p> <p><i>The same reference number as in UNB / 0020 has to be entered here. This number is compared to the entry in Segment UNH at the stage of reception of the message.</i></p>	

Message Example:

UNA:+.? ‘

UNB+UNOC:3+4399901598867:52+Supplier-DE:52+050401:1625+1+PSWD’

UNH+1+ORDRSP:D:96B:UN:ITEK33’

BGM+22E+4711019283+4’

DTM+4:20050330:102’

IMD+++EV::89’

FTX+ORI+++Free Text:which makes personal processing of this message necessary’

RFF+ACE:456123’

NAD+SU+1::9+++Exemplary company: 1+Exemplary street 1+Exemplary city++59929+DE’

RFF+XA:789456123’

CTA++:Exemplary contact’

CUX+2:EUR’

TDT+13++21’

TOD+6++CAF’

LOC+11+Goods train station:::Exemplary city’

ALC+A++++RAA’

PCD+3:2.25’

LIN+1++5711928301:MF’

IMD+++ZU::89:additional text concerning line item’

QTY+12:9.000:PCE’

DTM+2:20050415:102’

PRI+GRP:12.00:::1:PCE’

RFF+VN:6711928301’

ALC+A++++FI’

MOA+8:0.50’

SCC+22’

QTY+11:2500:PCE’

DTM+2:20050410:102’

QTY+11:6500:PCE’

DTM+2:20050430:102’

LIN+2+7+6734120043:MF’

IMD+++ZU::89:text concerning article 2’

QTY+12:8.000:PCE’

DTM+2:20050417:102’

PRI+GRP:15.00:::1:PCE'

RFF+VN:77216845'

ALC+A++++SF'

PCD+1:0.75'

LIN+1++7119528301:MF'

...'

UNS+S'

UNT+55+1'

UNZ+1+1'